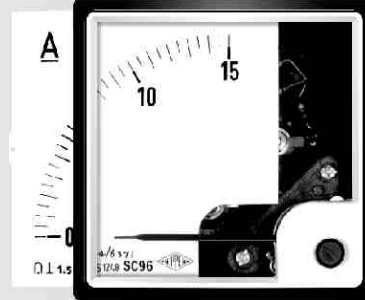


MOVING COIL METERS



FEATURES

- High coercive magnetic circuit
- Spring back sapphire jewels
- High Torque / Weight ratio
- Critically damped movement
- Highly linear dial pattern
- Self shielded movement
- Angle of deflection 90° and 240°
- Type-tested at ERTL



90° MOVEMENT



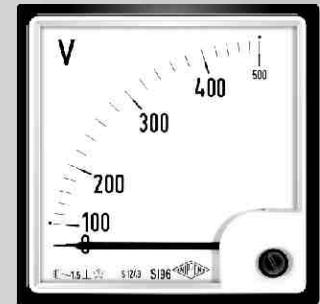
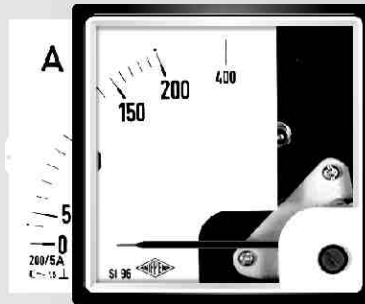
240° MOVEMENT

MOVING IRON METERS



FEATURES

- Oil damped movement with recessed jewels
- Spring back sapphire jewels to neutralize shock & vibration
- Very high torque to weight ratio
- Shielded movement
- Totally consistent scale pattern
- Type-tested at ERTL

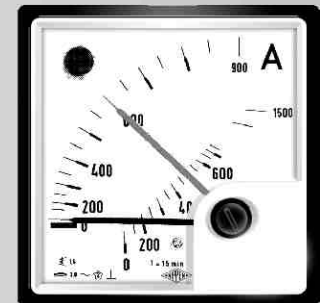
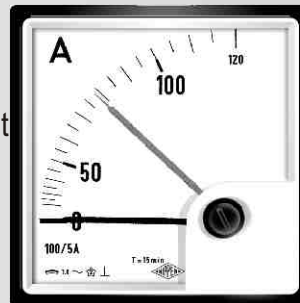


MAXIMUM DEMAND / BIMETALLIC AMMETERS



FEATURES

- Bimetallic Spiral rotates due to heat generated by passage of current
- Indicates mean current over specified period
- Red pointer is Slave and black pointer attached to spiral is Driver
- Position of red pointer is the maximum demand for the period
- Reset mechanism to bring the red pointer to zero which can be locked
- Accuracy class 3.0
- VA Burden 2.5 approx.
- Both mean maximum current and instantaneous currents are measured in model MD-96S



BIMETALLIC MOVEMENT